

TARAFLEX®

— SPORTS FLOORING —



Taraflex® Systems

Gerflor®

THE BENEFITS OF TARAFLEX® SPORTS FLOORING

1

Taraflex® systems benefit from a ProtecSol® surface treatment for optimal hygiene and easy ongoing maintenance. Unlike wood-based floors that will need regular sanding and re-varnishing to maintain a fresh look.



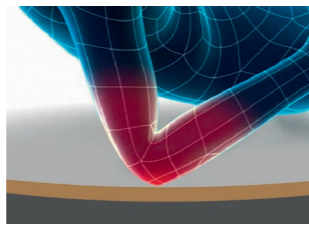
2

Taraflex® systems resist indentation, which allows schools to adapt the sports hall for other uses such as temporary classrooms and dining rooms. Perfect for tables and chairs which can be used without damaging the surface.

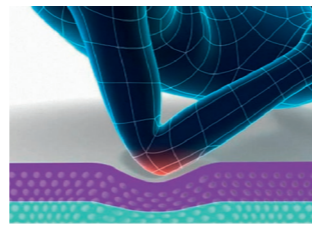


3

Taraflex® combi-sport system offers immediate impact protection and provides shock absorption properties. This minimises the force of impact and reduces the long-term risk of injuries, compared with traditional wood floors.



Small surface impact area, low IPI floors, high risk of immediate injuries

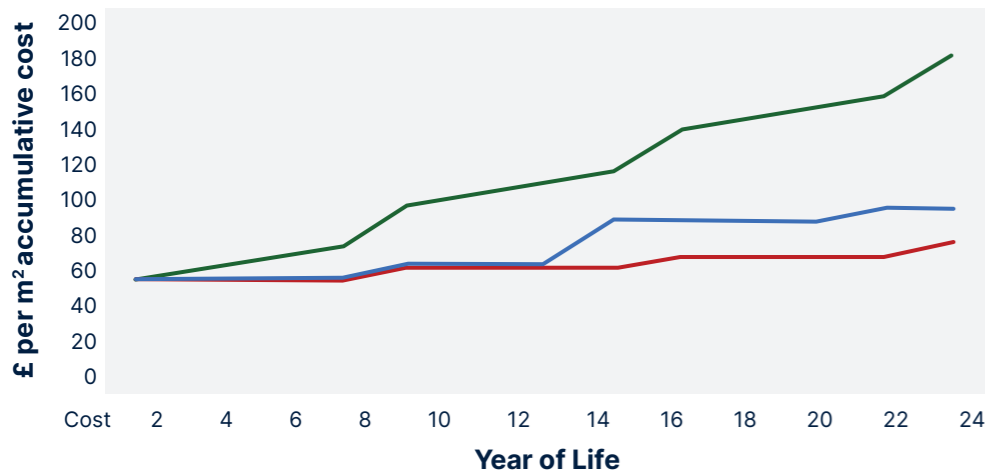


Large surface impact area, high IPI floors, helps to reduce potential injuries

COST COMPARISON

Taraflex® delivers significantly reduced life cycle costs when compared to other types of sports flooring. This is achieved through innovative surface treatments removing the need for heavy maintenance during its life span.

Simulated cost comparison excluding routine cleaning



- Cost of traditional timber sports floor per m²
- Cost of PU sports floor per m²
- Cost of **TARAFLEX** per m²

Costs based on cleaning and maintenance guidelines, specified by the manufacturers, to maintain warranties.

TARAFLEX® SL*: A COMMITMENT TO THE ENVIRONMENT

*SL: Sustainable & Looselay

An optimal lifecycle

0%

adhesive

100%

recyclable



By combining Gerflor sport systems with Taraflex® SL, the longevity of the undercarriage is preserved even when the playing surface reaches the end of its usable life. Simply remove Taraflex® SL without causing any damage to the system and replace it effortlessly. Just as easy to remove as it is to install, you can reuse the slab and flooring without any hassle.

No adhesives are needed, allowing your flooring to be preserved whilst offering the option of a second life. You can choose to recycle or reuse the materials, contributing to a sustainable approach. Taraflex® SL reflects our commitment to the environment, the planet and the people.

And just like all our Olympic-grade sports floors, you'll be pleased to discover that Taraflex® SL delivers outstanding sports performance and is incredibly easy to clean and maintain.

DLW: SUSTAINABLE SYSTEMS FINISHES

The new DLW Linodur Sport flooring combines modern aesthetics with nearly a century of expertise in linoleum sports flooring innovation and development. This range introduces the innovative Neocare™ surface finish, significantly improving the quality compared to its previous version.

Specifically designed for sports applications, the DLW Linoleum Flooring range takes inspiration from nature, utilising 98% natural raw materials such as linseed oil, wood, limestone, jute and resin. Available in a variety of colours which allows for unique and eye-catching designs.

Linodur Sport not only provides visual appeal but also offers the following benefits:

- Certified by multiple eco-labels, including the Blue Angel
- The unvarnished product allows for easy tracing of lines after installation
- Suitable for installation on a wooden subfloor
- With its timeless and classic aesthetics, the Linodur Sport solution is an excellent choice for gymnasiums and sports halls

98%

Natural (bio based & mineral)

76%

Rapidly renewable

40%

Recycled content

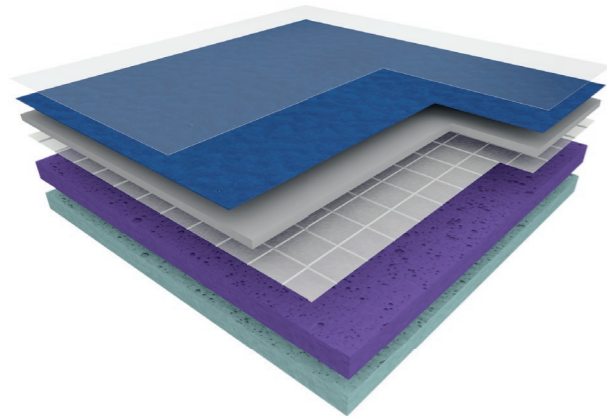
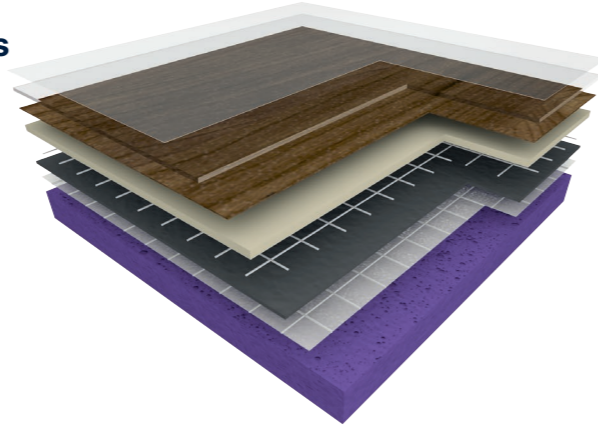


TARAFLEX® SURFACES

Taraflex® Multi-Use

Suitable for all types of sports and leisure activities

- A real sports floor in the P1 category (complies with EN Standard 14904) 25-35% of shock absorption
- Excellent indentation resistance and recovery from tables and chairs
- Triple action ProtecSol® surface treatment for easy maintenance, friction protection and "intelligent" sliding coefficient



Taraflex® Evolution

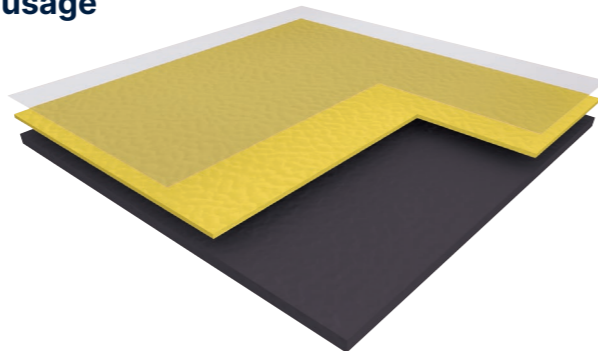
Ideal for a variety of sports & leisure activities

- P1 category (complies with EN Standard 14904) 25-35% of shock absorption
- Triple action ProtecSol® surface treatment for easy maintenance, friction protection and "intelligent" sliding coefficient

Taraflex® Surface

Ideal for rolling sports & heavy duty multi-purpose usage

- Highly durable D-MAX™ multi layer surface
- Maximum durability and indentation resistance
- Triple action ProtecSol® surface treatment for easy maintenance, friction protection and "intelligent" sliding coefficient



TARAFLEX® SYSTEMS

Combines the benefits of Taraflex® surface with a sprung floor undercarriage system

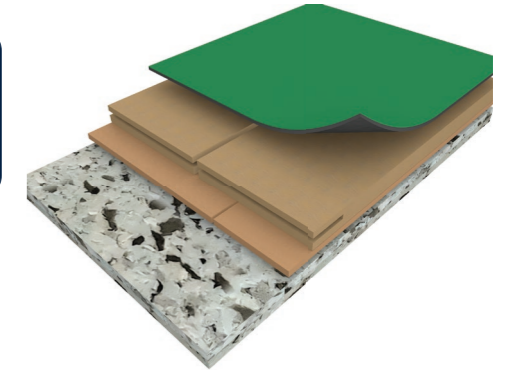
Taraflex® AE 85

- Adjustable height for uneven subfloors
- EN 14904 complaint: category A4 with <55% force reduction



Taraflex® Subflex AE

- Ideal for low profile / renovation projects*
- EN 14904 complaint: category A3 with <40% force reduction



Both floors meet DfE technical guidance

All systems benefit from:



- Reduces heat build up which prevents skin burns
- Optimise foothold and slide to prevent injury and improve performance
- Low life cycle costs and low maintenance - a 'no polish for life' surface

The benefit of impact protection as well as ultimate levels of shock absorption

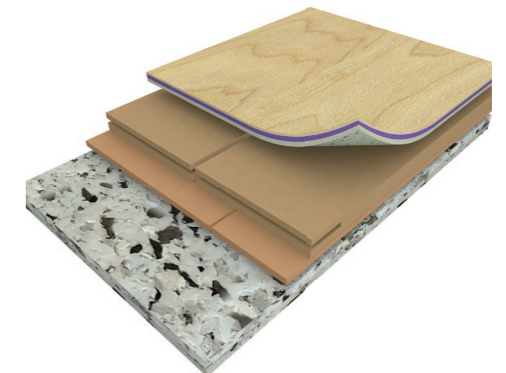
Taraflex® Combisport 85

- Ideal for installations with uneven subfloors



Taraflex® Subflex Combisport

- Ideal for installations requiring a low profile / renovation projects



Both Combisport systems benefit from:

- Impact protection helping to reduce injuries when diving and falling
- Maximum player safety and ball bounce due to patented rubber shock absorbers

TECHNICAL DATA

Description	Standard	Requirement	Units	Taraflex® Subflex with Taraflex® Evolution / Multi-Use	Taraflex® Combisport 85 with Taraflex® Evolution / Multi-Use	Taralex® Subflex AE with Taraflex® Surface	Taraflex® AE85 with Taraflex® Surface
PRODUCT DESCRIPTION							
Surface treatment	-	-	-	Triple-Action ProtecSol®			
Multilayer surface	-	-	-	D-Max ^{COMFORT}			
Foam Backing	-	-	-	CXP HD			-
Typical total system height	EN 428	-	mm	33.8mm system + 6.2mm TX Multi-Use 7.5mm TX Evolution	Taraflex® Combisport 60mm upwards (contact us for upper limits)	33.8mm + 2mm Taraflex® Surface	Adjustable 55mm upwards (contact us for upper limits)
Weight of panels	EN 430	-	Kg/m ²	17.7	21	15.9	21
Length of panels	EN 426	-	mm	1321	2400	1321	2400
Width of panels	EN 426	-	mm	549	600	549	600
SPORTS CHARACTERISTICS							
EN 14904 classification	-	-	-	C3	C4	A3	A4
Shock absorption	EN 14808	≥ 25%	%	≥ 45%	≥ 55%	≥ 40%	≥ 55%
Vertical deformation	EN 14809	≤ 5	mm	≤ 5			
Sliding coefficient	EN 13036-4	80 ≤ x ≤ 110	-	80 ≤ x ≤ 110			
Ball bounce	EN 12235	≥ 90%	%	≥ 90			
TECHNICAL CHARACTERISTICS							
Abrasion resistance	EN ISO 5470-1	≤ 1000	mg	≤ 300			
Impact resistance	EN 1517	≥ 8	N/m	≥ 8			
Indentation resistance	EN 1516	≤ 0.5	mm	≤ 3.5	≤ 0.5	≤ 3.5	≤ 0.5
CLASSIFICATION							
Fire	EN 13501-1	-	-	C _{fl} -s1			
Anti-bacterial and fungicidal treatment	-	-	-	Sanosol®			
CE MARKING							
CE	EN 14 904: 2006	-	-	Fire force reduction sliding coefficient			

ESFA GUIDELINES

The ESFA, have for a number of years, communicated a baseline design. This specification has been open to discussion and certain manufacturers make claims about their involvement in writing the specifications.

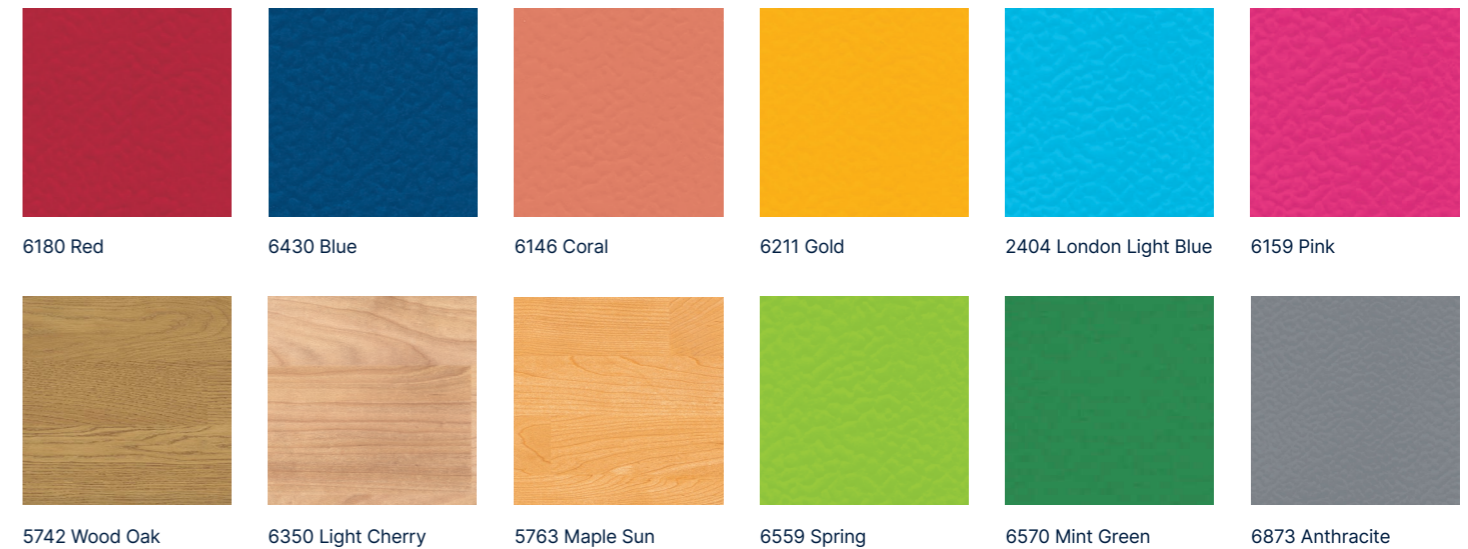
Here at Gerflor, we just wanted to make you aware of our offering when met with the Multi-Use flooring criteria in the ESFA guidelines. You can be sure that Taraflex® systems offer many benefits over more traditional area elastic systems.



Education & Skills Funding Agency

HERE IS A SMALL SELECTION OF OUR COLOURS

More colours available.



OUR SUSTAINABLE APPROACH



Indoor air quality



Energy saving up to 15%



A second life programme for post installation waste



100% recyclable Proactive manufacturing waste management



Life Cycle Analysis reduced maintenance costs



REACH compliant selected & responsible raw materials



CONTACT US FOR A FREE SITE SURVEY & EXPERT ADVICE

+44 (0) 1625 428 922
 contractuk@gerflor.com
 gerflor.co.uk
 gerflor.ie
 gerflorsportsflooring.co.uk

UNITED KINGDOM: Gerflor Ltd
Park Green, Macclesfield,
Cheshire, SK11 7LZ
Tel: +44 (0) 1625 428 922
E-mail: contractuk@gerflor.com
Visit: www.gerflor.co.uk - www.gerflorsportsflooring.co.uk

gerflor.co.uk
gerflor.ie
gerflorsportsflooring.co.uk

IRELAND: Gerflor Ltd
Ballybay Road, Carrickmacross,
Co. Monaghan, Republic of Ireland
Tel: +353 (0) 42 966 1431
E-mail: gerflorirl@gerflor.com
Visit: www.gerflor.ie - www.gerflorsportsflooring.co.uk



NBS Source
PARTNER

Uniclass Pr_35_57_71_76			
CI / SFB			
	(43)	Tn6	

UK reference - May 2023



Health
& Safety



ISO 14001



Recycling



Life Cycle
Analysis

Committed to sustainable development

Gerflor[®]