

# FAST TRACK REFURBISHMENT WITH TARAFLEX®



**Gerflor®**



# BEFORE

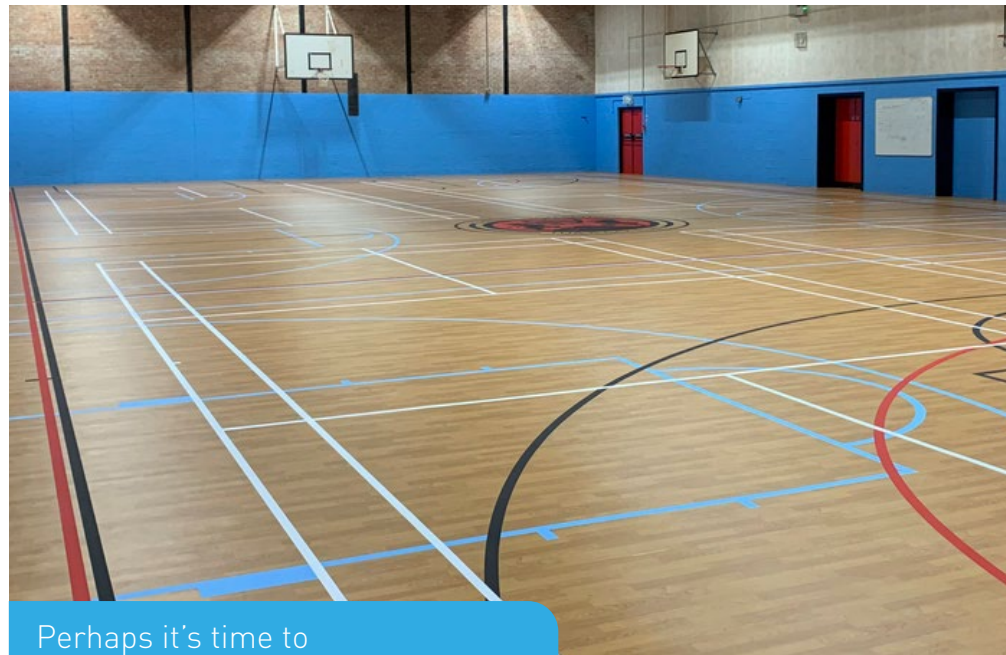


Is your existing sports hall flooring in need of refurbishment?

Historically, traditional sports floors were always seen as adequate and fit for purpose, but as technology has advanced, there are alternative products available that are safer and more sustainable.

- Do you spend significant money maintaining your current floor?
- Does your flooring bring immediate impact protection?
- Does it offer long-lasting durability and high performance?
- Is your current floor sustainable with low maintenance costs?
- Is your flooring of an Olympic pedigree?

# AFTER



Perhaps it's time to consider an alternative solution...

Taraflex® is an indoor synthetic sports flooring range that is widely recognised and used within the education, community, leisure and health and fitness sectors.

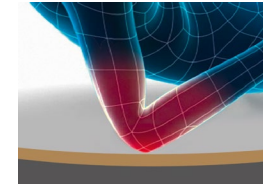
- Cost effective solution for refurbishment/replacement of older sports floors.
- Overlay existing flooring to minimising maintenance costs.
- Approved by many national and international governing bodies of sport.
- Gerflor's Taraflex® is priced competitively and minimises installation time.
- Fitted at every Olympic Games since 1976.

To learn more about our products visit [gerflorsportsflooring.co.uk](https://gerflorsportsflooring.co.uk) | [gerflor.co.uk](https://gerflor.co.uk)

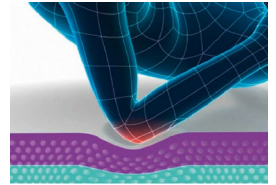


## THE BENEFITS OF TARAFLEX®

- 1** Taraflex® offers immediate impact protection and provides shock absorption properties. This minimises the force of impact and reduces the long-term risk of injuries, compared with traditional wood floors.

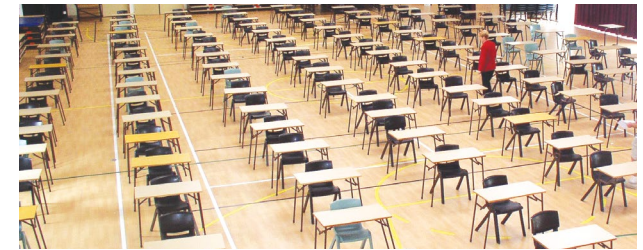


Small surface impact area, low IPI floors, high risk of immediate injuries



Large surface impact area, high IPI floors, helps to reduce potential injuries

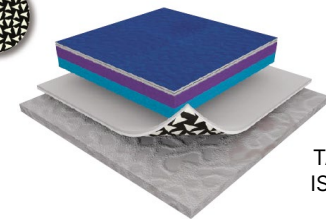
- 2** Taraflex® Sustainable Looselay (SL) combines an easy, fast installation with the high quality standards of Gerflor: ease of maintenance, great sports performances and durability. No glue, no compromise!



- 3** Combining Taraflex® with our unique Isolsport product means it can be overlayed on top of the existing flooring, for a quick refurbishment programme to minimise downtime.



ISOLSPORT  
MEMBRANE



TARAFLEX®  
ISOLSPORT  
SYSTEM

- 4** Taraflex® comes with a Protecsol® surface treatment for optimal hygiene and easy ongoing maintenance. Unlike wood-based floors that will need regular sanding and re-varnishing to maintain a fresh look.





## HERE IS A SMALL SELECTION OF OUR COLOURS

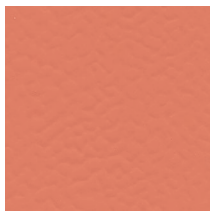
More colours available.



6180 Red



6430 Blue



6146 Coral



6211 Gold



2404 London Light Blue



6159 Pink



3708 Wood Grey



6350 Light Cherry



6038 Terracotta



6559 Spring



4331 Wood Natural

## OUR SUSTAINABLE APPROACH



Indoor air quality



A second life programme for  
post installation waste



Energy saving  
up to 15%



100% recyclable  
Proactive manufacturing  
waste management



Life Cycle Analysis  
Reduced maintenance costs



REACH compliant  
selected and responsible  
raw materials



## CONTACT US FOR A FREE SITE SURVEY & EXPERT ADVICE

 +44 (0) 1625 428 922  
 [contractuk@gerflor.com](mailto:contractuk@gerflor.com)  
 [gerflorsportsflooring.co.uk](http://gerflorsportsflooring.co.uk)  
 [gerflor.co.uk](http://gerflor.co.uk) | [gerflor.ie](http://gerflor.ie)

# Gerflor®