

IMPORTANT : We are continuously making technical improvements to our products; before starting any work, our customers should check with us that this document is still in force.

Examine the floor covering prior to installation to ensure that there are no visual defects. If a visual defect is detected, please inform GERFLOR and do not begin installation until you receive approval to proceed.

GENERAL

The floor covering must be laid by a specialist contractor who is familiar with the specific features of this product and the laying requirements. The laying requirements primarily relate to the dimensional instability of linoleum caused by relative humidity if it is inadequately glued down. The product is also very rigid, requiring great skill when cutting the breadths and making adjustments.

NOTE 1 : A natural yellow substance forms as the linoleum dries out and is often mistaken for discolouration. The substance will disappear over time with exposure to light.

1. SUBSTRATES

Permitted substrates for LINOLEUM Sport:

TARAFLEX® SYSTEM TOP COMFORT AND TARAFLEX® SYSTEM ENDURANCE.

2. MATERIALS

LINODUR SPORT / LINEA SPORT / COLORETTE SPORT / MARMORETTE SPORT :

Thickness: 4 mm,

Length: 15 – 27 m,

Width: 200 cm,

Differences in width (tolerances) may exist between the breadths.

3. CONDITIONS BEFORE LAYING

■ 3.1 - STORING THE MATERIALS

Care must be taken not to drop the rolls when they are unloaded.

The materials involved in laying glue-down linoleum floor coverings must be acclimatised for 48 hours before laying, in an enclosed, ventilated and secure room, protected from moisture and excessive heat, in ambient conditions identical to those set out below, and on a dry substrate.

They must be stored vertically. The rolls are cut a day or two in advance, stored upright and loosened, or rolled out flat on a dry substrate.

Unpacked rolls stored in the gymnasium before being unrolled must not be exposed to direct sunlight, because ageing may occur on the exposed part of the roll*.

** A natural yellow substance forms as the linoleum dries out and is often mistaken for discolouration. The substance will disappear over time with exposure to light.*

■ 3.2 - TEMPERATURE AND HUMIDITY:

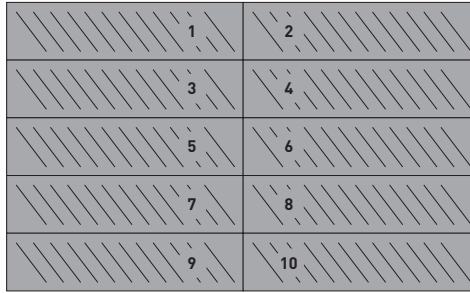
The minimum substrate temperature required for laying is +10°C and a room temperature of +15°C. The humidity must not exceed 75% while work is being carried out. The humidity and the substrate temperature must be such that there is no condensation on the substrate (dew point).

4. UNROLLING THE MATERIAL (at least 24 hours before gluing down)

Each roll of linoleum has a label showing its technical data (length, thickness and width) and a roll number. Rolls should be laid in numbered order to avoid colour differences. Do not use rolls from different batches in the same room.

The breadths are laid in the same direction. The breadths are adjusted by using a special linoleum strip cutter (both breadths in succession) to straighten the selvages. You are recommended to do this during cutting. The breadths will be welded so that it does not need to be done when gluing.

The breadths will be laid lengthwise from the transverse axis or according to a specific layout in case of a two-colour scheme.



WARNING: breadths will always be unrolled from the centre of the gym.

- The end of the material near the cardboard tube must be laid along the walls.
- Leave at least 10 cm at the walls.
- If there is an end-to-end joint, the breadths must be at least 5 m.

5. GLUING

The recommended types of glue are specified in the Technical Report

- Wait 24 hours after unrolling the breadths.
- Fold back half the length.
- The flooring is laid using the single bond method with an adhesive that is suitable for linoleum, applied using a serrated spatula (type B1 in the TKB standard) with a coverage of 350 to 400 g/m².

NOTE : Regularly check the wear of the blades used, changing them as often as necessary to maintain the recommended adhesive coverage.

- Clean spilled adhesive (while it is still wet) and tools using water or another cleaner recommended by the adhesive manufacturer.

IMPORTANT :

Carefully follow the instructions provided by the adhesive supplier. Lay the material onto fresh adhesive.

If the adhesive is allowed to dry out, it will not coat the back of the material successfully (poor adhesion).

Smooth out the material, initially by hand during installation and subsequently with a roller once the linoleum has been laid. Use the roller in a crosswise direction across the breadths and then lengthwise.

If necessary, place a constant load (for example using small sandbags) onto areas where adhesion is poor.

■ 5.1 - EN CAS DE BARRE D'ÉTUVE

Every standard roll of linoleum has stove bar marks created during the drying process. These areas should be treated separately as follows:

Mark out two lines on the substrate and on the back of the floor covering, indicating the position of the bar and spaced from 0.80 to 1 ml, with double gluing using aqueous phase neoprene adhesive.

6. CUTTING

There are two ways to cut LINOLEUM.

- Freehand using a hot air tool, after gluing and smoothing out.
- By scribing after most of the breadth has been glued down (approximately 10 to 12 m).

■ 6.1 - SCRIBING ALONG THE WALLS

Rest the material on top of the penultimate breadth, making sure it is correctly aligned. Leave the end(s) of the breadth to extend up the wall.

Using a large scribe device with a spike, mark the profile of the wooden panels onto the flooring. Use a knife with a hooked blade to cut the linoleum, angling the blade towards the inside of the breadth being laid.

Reposition the breadth along the wall.

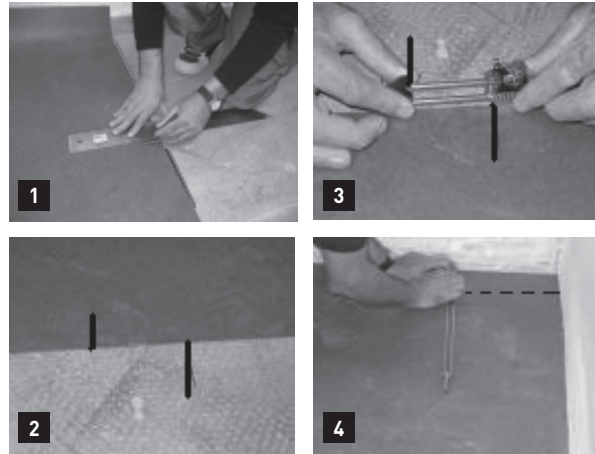


6.2 - SCRIBING THE ENDS

After gluing, very long breadths of linoleum shrink lengthwise by a few millimetres.

To ensure that this is not visible on the skirting, follow these steps:

- Stop applying adhesive to the substrate at a line drawn 1.50 ml from the edge of the skirting (perpendicular to the material).
- Glue down and smooth the material up to this line.
- Draw a reference mark on the floor covering and the substrate (1).
- Slide a cardboard core under the unglued section of linoleum, positioning it so it is parallel to the line you drew earlier, to release the end of the breadth (2).
- Adjust the scribe device between the two marks (3).
- Carry out scribing and cut the end as described above (4).
- Remove the core, apply adhesive, glue down the material and smooth down the end of the breadth using a roller.
- Repeat these steps for each end, taking care not to crack the linoleum while handling it.



6.3 - CUTTING AROUND DOOR FRAMES

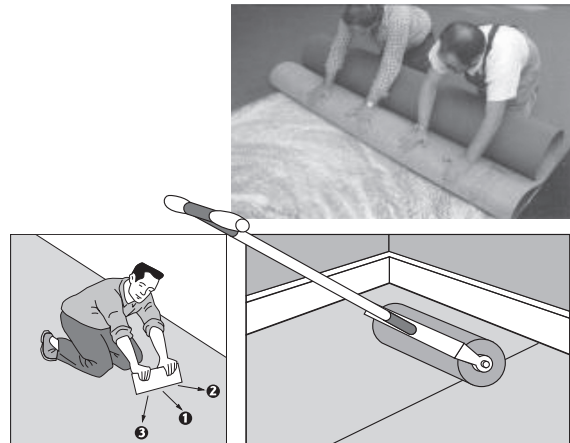
Use a heater to soften the linoleum for easier cutting.

7. SMOOTHING

- Avoid creating bulges when laying the breadths onto the adhesive.
- To prevent cracking, work the ends of the breadths with forward and back movements to soften them when you place them onto the adhesive

There are two parts to the smoothing process:

- Manual smoothing when the material is laid, using a cork block.
- Carefully smooth over the entire surface using a smoothing roller (heavy, about 80 kg), to ensure that the adhesive coats the back of the floor covering successfully.



8. HOT WELDING (after 12 hours)

Hot welding (more accurately thermal bonding because the welding cord is different) is carried out as follows:

8.1 - CHAMFERING

Chamfering allows the joint to be opened and corrected, to remove any traces of adhesive that may impair the quality of the weld.

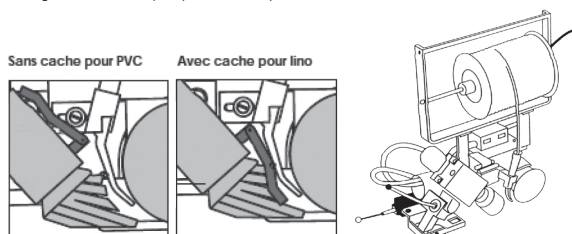
There are two chamfering methods:

- Manual using an appropriate tool (triangle, rule, etc.)
- Mechanical using an electric chamfering machine fitted with a 3.3 to 3.5 mm bit

4 mm linoleum floor coverings must be chamfered to two thirds of their thickness.

8.2 - AUTOMATIC WELDING MACHINE

Welding is carried out using a LEISTER UNIVERSAL or UNIFLOOR hot air welding machine fitted with a narrow multi-outlet nozzle designed for this purpose. Temperature: 350° to 450°.



Nozzle codes:

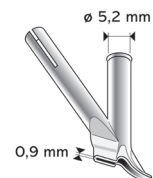
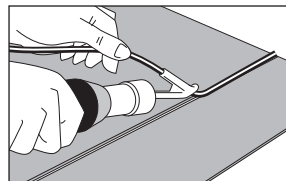
ROMUS : 95253

LEISTER : 103.394

JANSER : 225 860 300

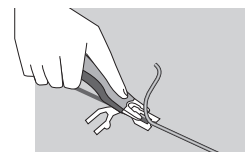
8.3. HAND WELDING WITH AN ULTRA SPEED NOZZLE

Use the «RAPID ULTRA» nozzle (diameter 5 mm, air vent 0.9 mm).
Ref.: JANSER 224 800 007 or ROMUS 95027.



8.4 - TRIMMING

Trimming is carried out once after the welding cord has cooled down using a Mozart knife.



9. GAME LINES

USE CONICA POLYURETHANE PAINT.
REFER TO [802] GAME LINE MARKING.

10. PROTECTING GAME LINES AND THE SURFACE

Linoleum floor coverings for sports activities are produced and supplied without any surface treatment, so that game lines can be properly applied.

Linoleum floor coverings can be used without any protection, but game lines will need to be restored more often.

You are advised to apply a protective varnish for linoleum surfaces that meets the requirements of EN 14904 / DIN 18302 (indoor surfaces for multi-sports use).

When applying the surface treatment, carefully follow the manufacturer's recommendations (cleaning the surface before application, conditions for applying the product, drying, first use, renovation, etc.).

Non-exhaustive list of product manufacturers:

Buzil – <https://www.buzil.fr/home.html>

Dr Schutz – <https://www.dr-schutz.com/>

Kipp retailer (<https://kipp-markierungen.de/>)

11. FINISHING

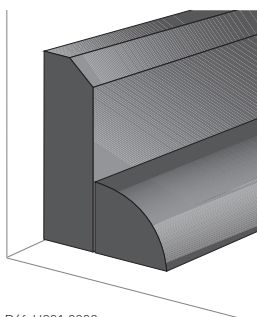
Tools are available for ensuring a flawless finish around recesses and fittings:

- Circular cutter fitted with a cutting centre finder.

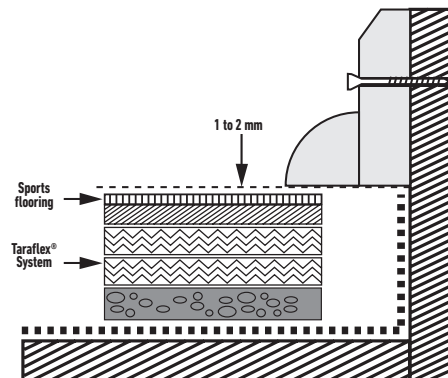
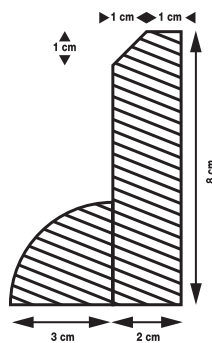
■ 11.1 - SKIRTING

Fit the skirting to cover the expansion joint around the outside.

	DEFINITION	REFERENCE	ITEM CODE
White wood skirting	Peripheral skirting 2 m x 8 cm x 5 cm	Skirting BB TX	H201 0009



Réf. H201 0009



12. FINAL CLEANING

Afterwards, give the area an initial clean with a neutral or redispersible detergent (pH < 9) that complies with the standard governing slip resistance.

Refer to the cleaning and maintenance instructions for LINOLEUM SPORT.

Type of product: Kiehl Procur Concentrate or Dopomat-secur complying with DIN 18032 T25 (slip resistance standard).

IMPORTANT: times before first use:

- For normal traffic, the floor can be walked on 48 hours after the work has finished.
- Wait 72 hours before installing sports equipment or moving loads on wheel.
- Static and dynamic loads must be evenly distributed when installing equipment, such as folded and open table tennis tables, referee tables, solid storage trolleys, removable basketball boards, apparatus, platforms, forklifts and utilities. Raceways and distribution plates must be dimensioned and positioned according to the loads. Refer to [803] STATIC AND DYNAMIC LOADING.

13. PUTTING INTO SERVICE - CIRCULATION

- Wait 48 hours before allowing normal foot traffic.
- Do not install fittings or furniture until 72 hours after laying.
 - Ensure that end caps on table and chair feet, and so on, are suitable for flexible floor coverings (PVC and linoleum) and will not damage the sports flooring.
 - We recommend flat end caps without any pattern and with the surface in full contact with the floor covering (no conical end caps).
 - Do not use rubber end caps.
 - Underfloor heating should not be switched on until at least seven days after the floor covering has been laid.

14. REPAIRS

In case of isolated repairs on small areas, there is no way to obtain the same shade.
We recommend carrying out major repairs for a more aesthetic visual effect.